

ACCES I/O eNET driver interaction with Microsoft's "Verifier" in Windows 2000/XP

General: This note applies ACCES I/O eNET serial ports operating in DRIVER mode.

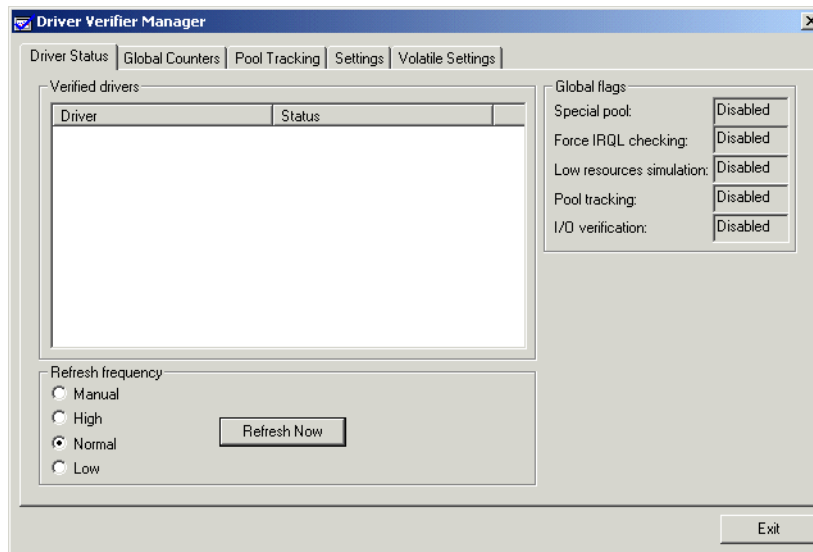
EVENT: Interaction between the ACCES I/O eNET and Microsoft's driver verifier software may cause a blue screen system crash. This event will be encountered when accessing or sending data to a serial port enumerated under an ACCES I/O eNET.

COMMENTS: The Windows 2000/XP Verifier utility may have settings enabled to verify signed/unsigned drivers. The serial drivers used by the ACCES I/O eNET are compatible with Windows 2000/XP, but are not "signed" by Microsoft. Therefore, to prevent system crashes, disable the Verifier settings, and re-boot the PC for the new settings take effect.

CORRECTIVE ACTION: Disable the Verifier settings as follows:

1. Go to START. In the "Run..." dialog, enter "verifier" and select "OK". The Verifier application will appear with a selection of options.
2. Disable settings, and exit from the Verifier. You can confirm on-screen that the settings have been disabled. HOWEVER, you MUST reboot the PC for the new settings to take effect.
3. Reboot the system, then re-check that the Verifier settings have been disabled.

Windows 2000 Verifier



Windows XP Verifier

